

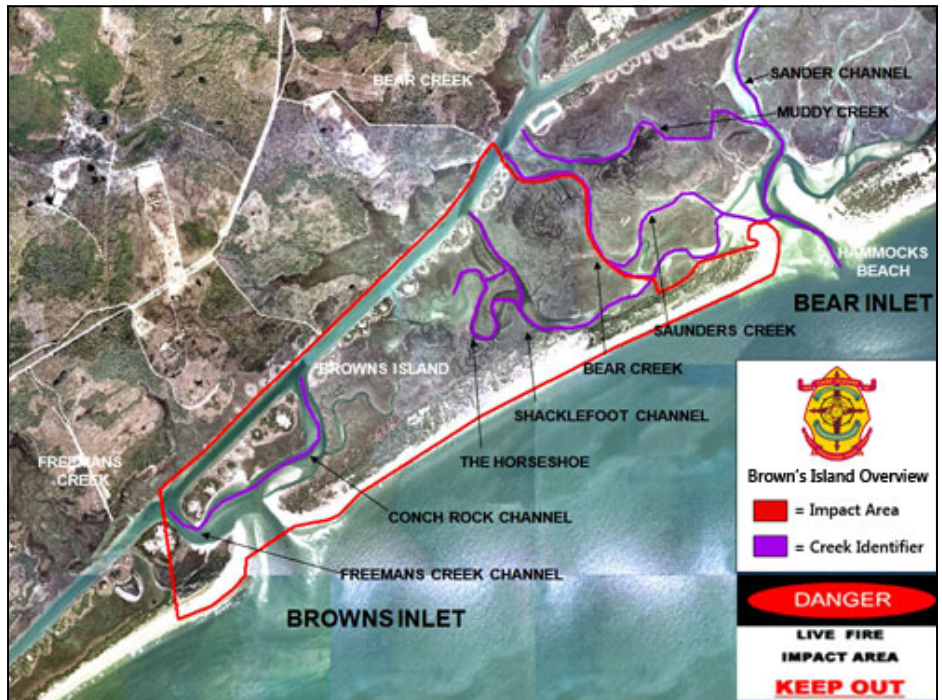


BROWN'S ISLAND POLICY

Base official's would like to re-emphasize to the community the importance of no trespassing on Brown's Island and remind users of the Atlantic-Intracoastal Waterway of the restrictions to the creeks and tributaries, shown below, leading to and around Brown's Island to protect them from the frequent live-fire training exercises conducted in the area and the danger of unexploded ordnance (UXO).

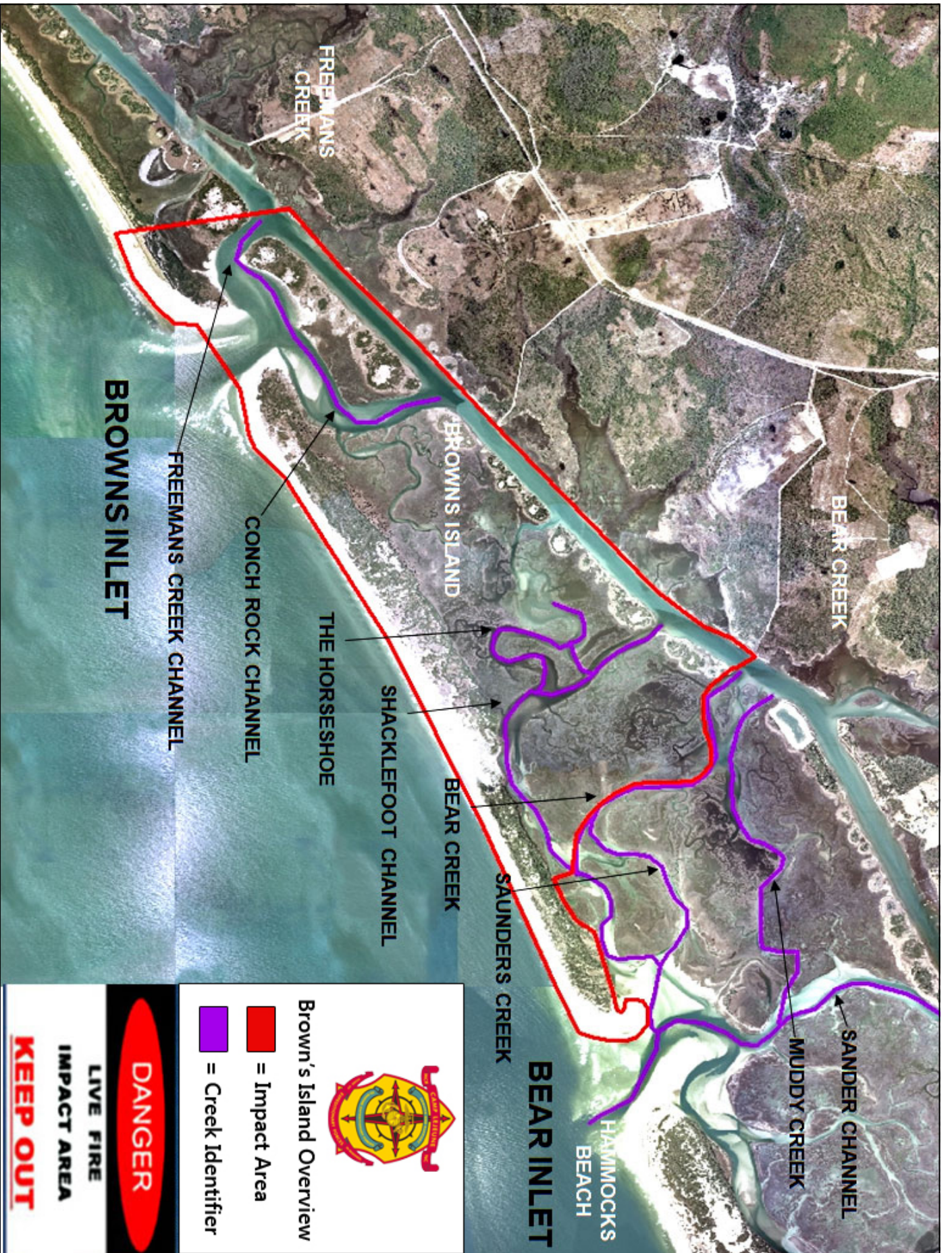
All rules and regulations originate and comply with the Code of Federal Regulations, specifically 33 CFR 334.440.

- Absolutely no unauthorized people on any part of the island.
- Boaters traversing the Atlantic-Intracoastal Waterway in close proximity to the island may not stop, tie up or disembark their vessels.
- No crab-pots, fishing with bottom dragging nets, anchoring, or any bottom disturbing activities are allowed anywhere in the vicinity of Brown's Island.
- All navigable waters in the area between the south bank of Bear Creek and the north bank of Brown's Inlet are base property and are strictly off-limits due to highly sensitive unexploded ordnance in this area.
- Bear Creek and Muddy Creek leading to the Intra-coastal Waterway to Bear Inlet are open to unrestricted navigation; however an unknown element of risk exists in this area due to the possible presence of unexploded projectiles.



- Boaters may proceed through Brown's Inlet without stopping during periods of nonmilitary use. For safety reasons due to the presence of unexploded projectiles, any contact with the bottom of the waterways or any bottom disturbing activity is strictly prohibited. Caution should be used through these waters.
- Military Police in concert with U.S. Coast Guard will continue to regularly patrol the area and issue citations to trespassers that will require an appearance before the federal magistrate in Wilmington. Violators can be imprisoned up to six months and fined a maximum of \$5,000.

For more information on this policy, please contact the Base Public Affairs Office at (910) 451-7440.



Brown's Island Overview

- █ = Impact Area
- █ = Creek Identifier

DANGER

LIVE FIRE

IMPACT AREA

KEEP OUT