



Marine Corps Base Camp Lejeune Town Hall Meeting

**Brigadier General Robert F. Castellvi
Commanding General
Marine Corps Installations East
Marine Corps Base Camp Lejeune**

22 August 2013



Agenda



- CG's Opening Comments
- Construction
- Family Housing
- Base Schools
- Naval Hospital
- Marine Corps Community Services



Commanding General



Command Philosophy



TAKE PRIDE IN OUR CORPS AND COUNTRY.

- Celebrate and champion the greatness of our country, the values and ethos that make this the greatest nation on earth.
- Carry yourself as an ambassador of the Marine Corps wherever you go, 24/7.

FOSTER UNIT COHESION, TEAMWORK, AND CAMARADERIE.

- Support a command climate that values the dignity of each and every individual. Hazing, Sexual Assault, Sexual Harassment, and Discrimination of any kind (age, gender, race/ethnicity, religion, sexual orientation) has no room in our Corps and will not be tolerated.



Command Philosophy



INSTILL A SENSE OF PURPOSE; WHAT YOU DO FOR UNIT AND CORPS MUST MATTER.

- Maximize and appreciate the contributions of every individual and tie it to collective goals and objectives.
- Strive to make a difference each and every day; ensure those around you feel a sense of pride and fulfillment; reward hard work and mission accomplishment.

STRENGTHEN AND MAINTAIN A SENSE OF BALANCE (PHYSICAL, MENTAL, EMOTIONAL, SPIRITUAL).

- Staying physically fit, mentally tough, emotionally resilient, and spiritually grounded;
- Nurturing and strengthening relationships with family & friends;
- Pursuing interests and hobbies that maximize our quality of life and happiness;
- Being well-rounded and grounded in who you are.



Commanding General's Priorities



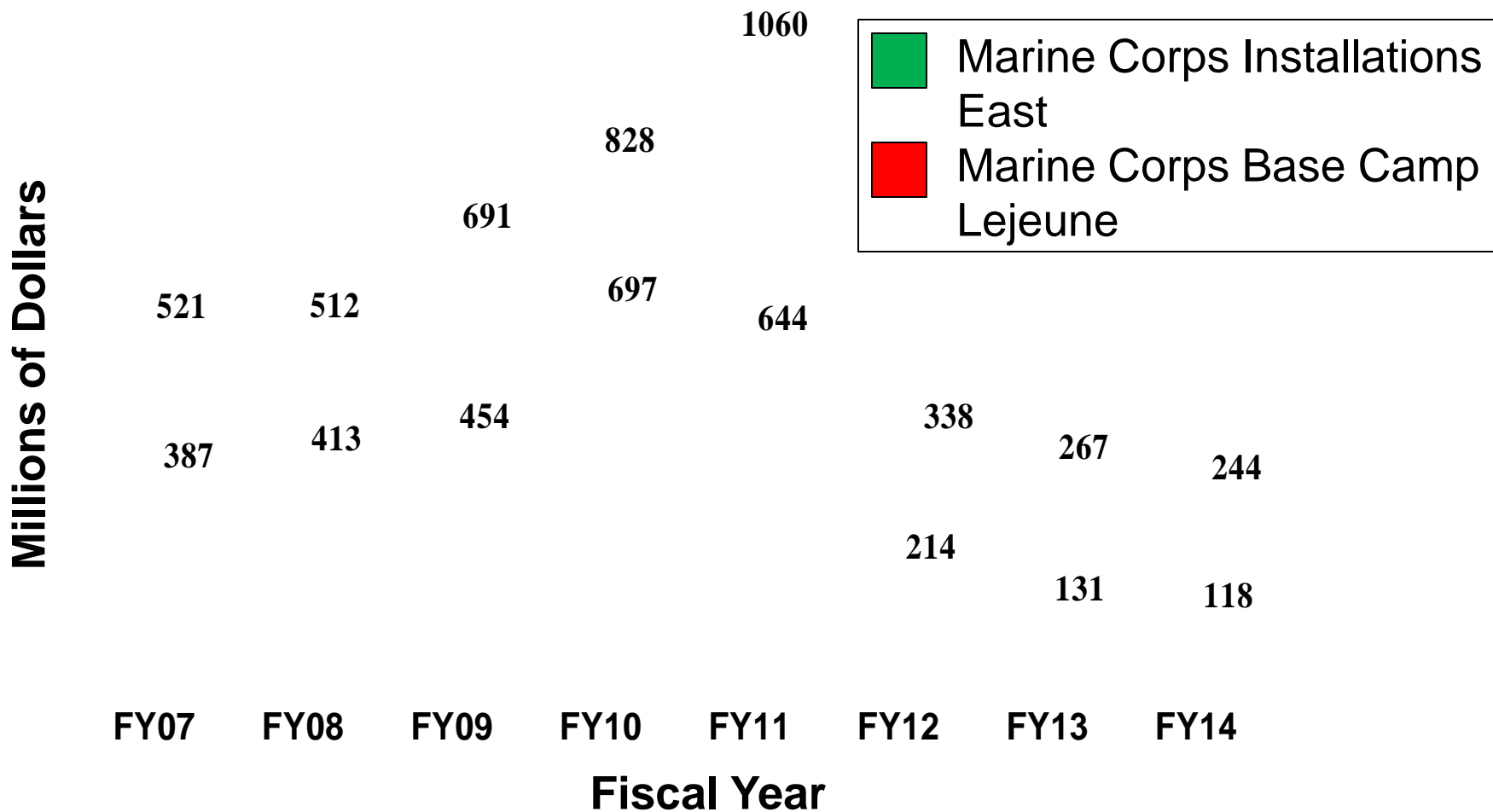
- Combat Readiness of the Operating Forces.
- Security & Safety of our Marines and Families
- Enhance Quality of life of our Marines & families through Community Services.
- Strengthen Community Relations with Regional/State/Local governments.



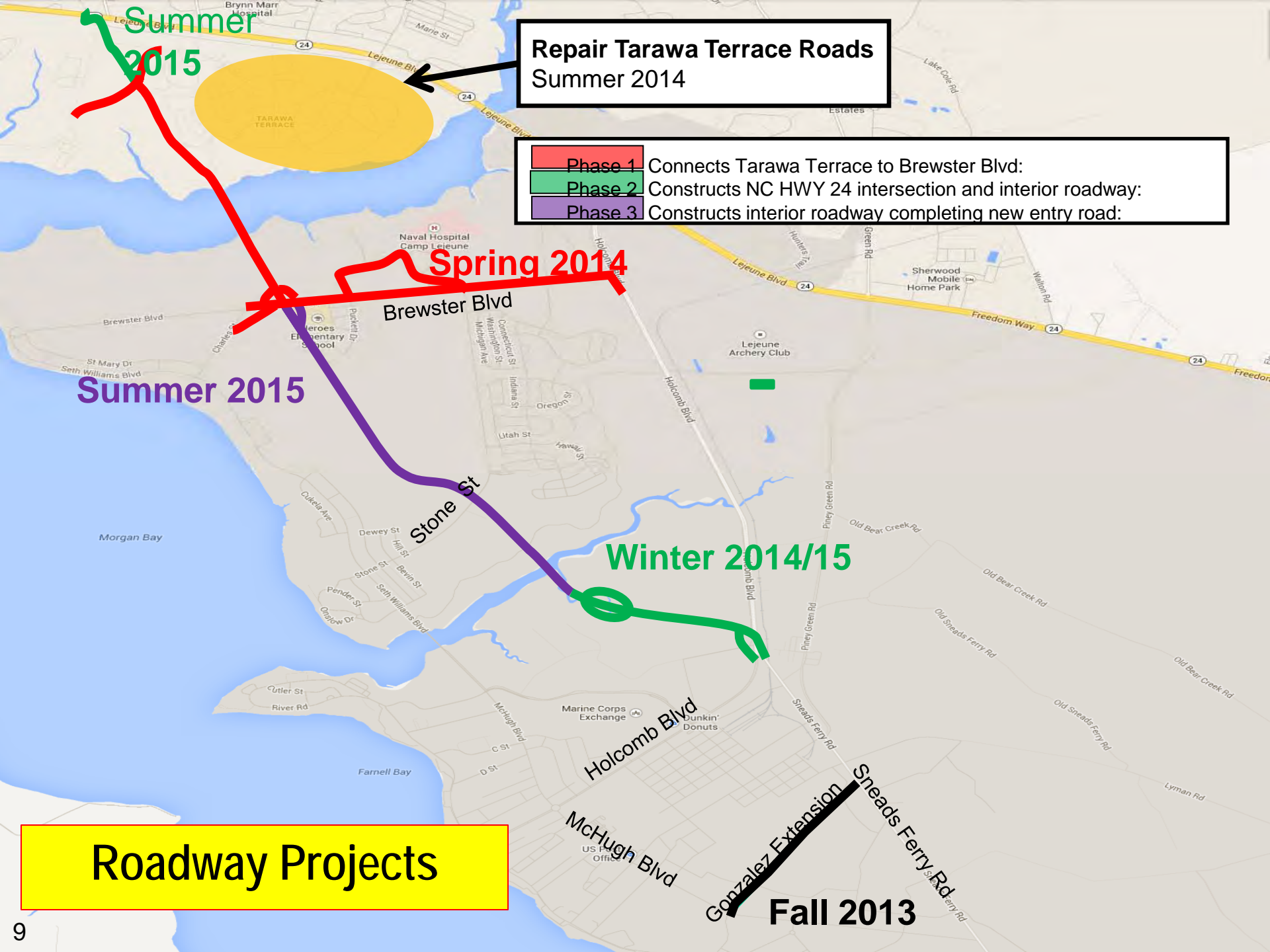
Construction



Military Construction



\$3.06 billion total construction from Fiscal Years 2007 to 2014 in Military Construction at Marine Corps Base Camp Lejeune



**Repair Tarawa Terrace Roads
Summer 2014**

- Phase 1 Connects Tarawa Terrace to Brewster Blvd:
- Phase 2 Constructs NC HWY 24 intersection and interior roadway:
- Phase 3 Constructs interior roadway completing new entry road:

Spring 2014

Summer 2015

Winter 2014/15

Fall 2013

Roadway Projects

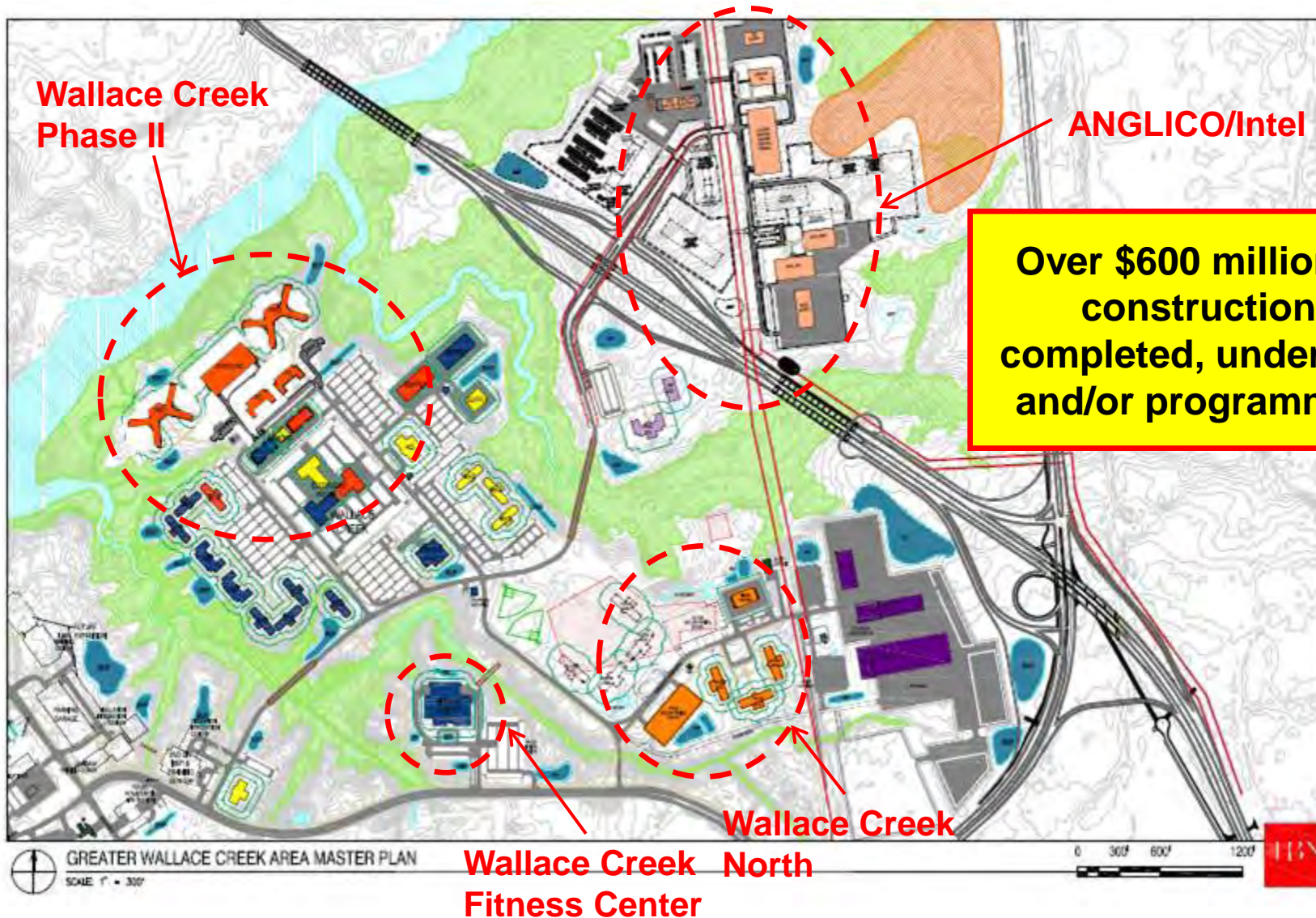


Construction Impacts to Multi-purpose Trails



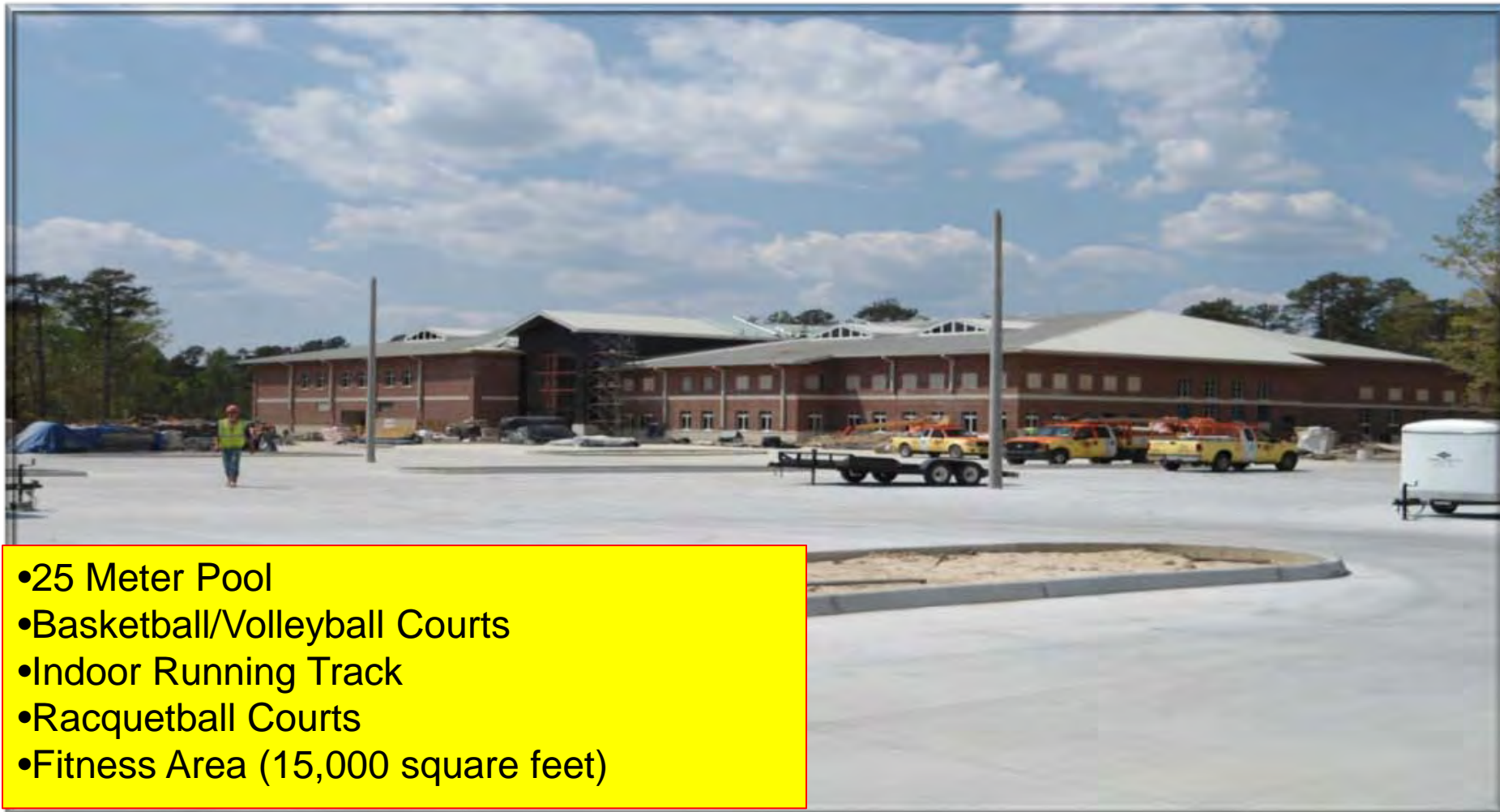


Wallace Creek Master Plan





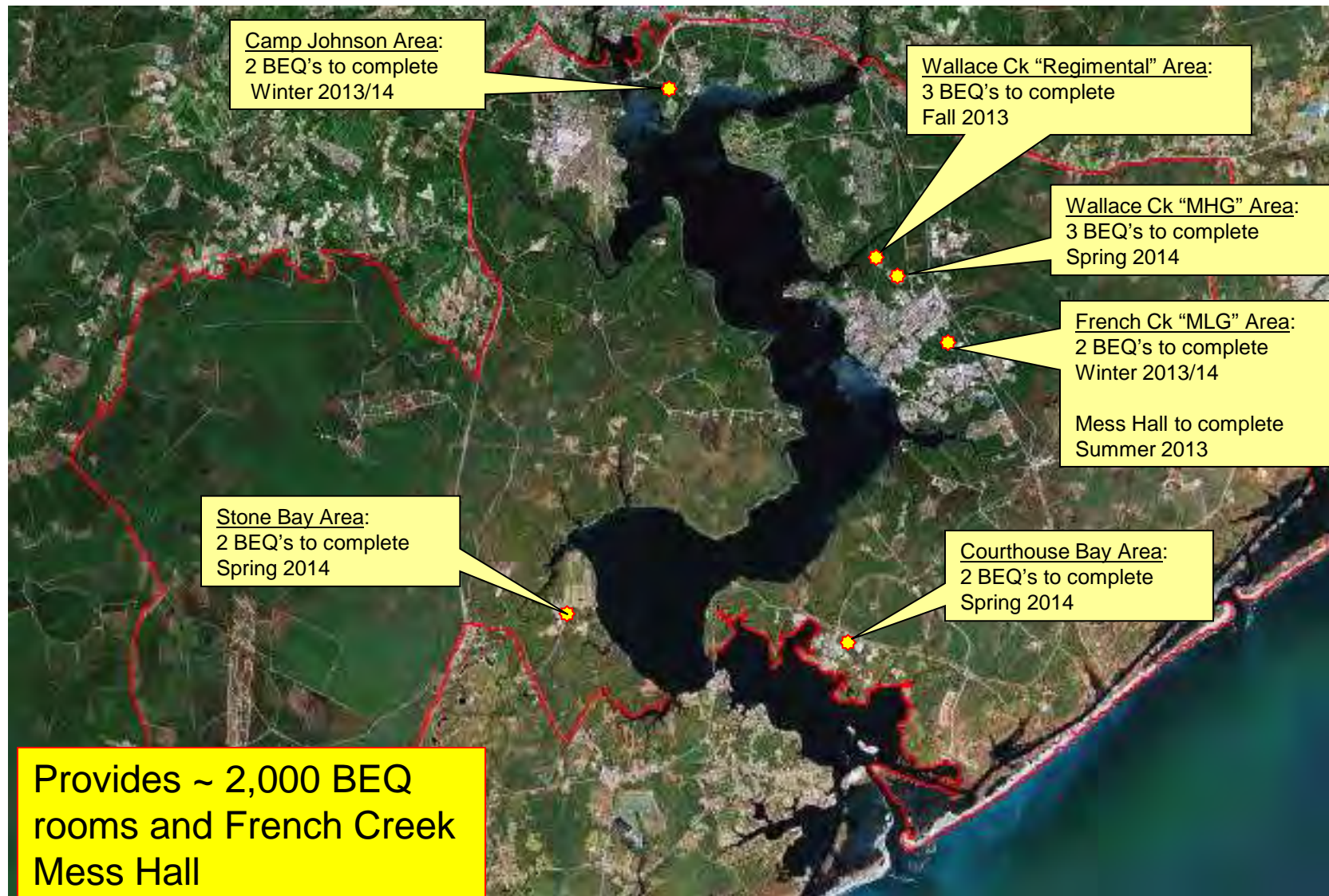
Wallace Creek Physical Fitness Center



- 25 Meter Pool
- Basketball/Volleyball Courts
- Indoor Running Track
- Racquetball Courts
- Fitness Area (15,000 square feet)



Barracks (BEQ) & Mess Halls Under Construction





Family Housing



Family Housing Private Public Venture Inventory



Managed by Atlantic Marine Corps Communities (AMCC)

- **Demolish & Rebuild – 1,743 Homes**
 - ➔ 7 General Officer Homes
 - ➔ 252 Watkins Village Homes, E1–E9
 - ➔ 778 Tarawa Terrace Homes, E1–E5
 - ➔ 80 Knox Cove Homes, E8–E9
 - ➔ 89 MCAS New River Homes, O1–O6
 - ➔ 537 Midway Park Homes, E1–E5 (still under construction)
- **Renovate - 1,452 Homes**
 - ➔ 123 Capehart Homes, Paradise Point
 - ➔ 100 Cottage Homes, Paradise Point
 - ➔ 65 Cape Cod Homes, Paradise Point
 - (2 were demolished in April 2013)
 - ➔ 245 2-Story Homes
 - (Paradise Point, Hospital Point & Courthouse Bay)
 - ➔ 659 Capehart Homes, Berkeley Manor
 - ➔ 260 Capehart Homes, MCAS New River
- **New Construction-322 Homes**
 - ➔ 136 Watkins Grove Homes, E6-E9
 - ➔ 186 Knox Landing Homes, E6-E9 (not yet completed)
- **No Renovations Completed – 1,130 Homes**
 - ➔ 909 Tarawa terrace – Military Construction
 - ➔ 161 Midway Park – Military Construction
 - ➔ 60 Watkins Village – Military Construction
- **Construct Community Centers**
 - ➔ Tarawa Terrace
 - ➔ MCAS New River
 - ➔ Watkins Village
 - ➔ Knox Landing (not yet constructed)
 - ➔ Midway Park (not yet constructed)

Subtotal:
4,647 homes



Family Housing Private Public Venture Inventory



Managed by Lincoln Military Housing

- **New Construction – Heroes Manor**
 - 400 Homes (Completed and Occupied)
 - 160 Homes (Incompleted)
- **Community Center**
 - Heroes Manor

Total AMCC and Lincoln (endstate):
5,207 homes



Housing Assignment Policy



- Service members choose between on-base and off-base housing
- For on-base housing, submit housing application (DD1746) and PCS orders to Military Housing Office
- Advanced applications placed on inbound wait list based on report date
 - Enlisted members have choice of private partners (Atlantic Marine Corps Communities or Lincoln Military Housing)
 - Officers and Staff Non-Commissioned Officers referred to Atlantic Marine Corps Communities
- If there is zero wait list in a community, family may be referred to first available home, even before report date
- Homes currently available (zero wait list) for all enlisted, warrant officers, and O1 to O5



Resident Energy Conservation Program



- Department of Defense initiative being implemented at all privatized housing in the United States
- Purpose: Reduce residential energy consumption by incentivizing energy conservation (rebates) and billing for excess use
 - Energy savings save money that can be used for housing services, maintenance and future renovations and contribute to Federal energy goals
- Method:
 - Residents receive rebates for consumption levels more than 10% below baseline for the month
 - Residents receive bill for consumption levels more than 10% above baseline for the month
 - Baseline is average consumption level for “like-type” homes for the given billing cycle
 - Minimum credit of \$25 before partner provides a rebate in order to save administrative costs
- Endstate: Lower overall energy consumption and return energy cost savings to improve housing services and maintenance and preserve funding for future renovations (improved family housing quality of life).





How is it going?



In a pilot program in South Carolina and Hawaii, the USMC saved more than 16 million kilowatt hours worth \$3.1 million from January 2011 to April 2013

Unusually cool weather make it difficult to measure savings at Camp Lejeune since live billing started in February 2013

Trends

- About 37% of residents consume within 10% of the baseline (above or below)
- About 31% of residents consume more than 10% of the baseline
 - Average bill is \$42
- About 32% of residents consume less than 10% of the baseline
 - Average rebate is \$39

Changes in like-type groups (LTG)

- Some units in Tarawa Terrace, Midway Park, and Paradise Point were separated into different like-type groups
- Affected units were given an additional 3 months of mock billing, after which time they were or will be returned to live billing



What can residents do?



Residents concerned about high consumption may take self-conducted surveys on their Partner's website:

- AMCC: Resident Energy Safari
- Lincoln: Home Energy Survey

Residents should also call in maintenance-related issues that affect energy consumption

Waivers may be requested to the Military Housing Office (Family Housing Division) for:

- Wounded Warriors who consume significant amounts of electricity as a direct result of their unique circumstances
- Families enrolled in Exceptional Family Member Program who consume significant amounts of electricity as a direct result of their unique circumstances

Contact the Family Housing Division for additional information.

Air conditioning is not an allowable reason for a waiver

Life-style circumstances (for example, family size or pets or hobbies) are not allowable reasons for waivers



Points of Contact



For questions about the RECP, please contact:

- Mr. Michael Lane
Director, PPV Liaison Branch, Family Housing Division
910-450-1627 ext. 204
- Ms. Dixie Lanier Johnson
Strategic Marketing Manager, AMCC
910-219-6437
<http://www.atlanticmcc.com/RECP>
- Mr. Tim Ferner
Director of Property Management, Lincoln Military Housing
910- 355-0111



Camp Lejeune Dependents Schools



Camp Lejeune Dependents Schools



DESIGNING EXCELLENCE
CREATING SUCCESS

Camp Lejeune Dependents Schools

- Leadership- Introductions
- Furlough/School calendar updates
- Redistricting/ Tarawa Terrace- Elementary now PK- 5
- School construction Knox and Delalio
- School Year 2013-2014 – Looking ahead



Camp Lejeune School Liaison



- Help with transitioning on or off base or to another school district
- Connection to support resources for tutoring and scholarship information
- Interstate Compact for Educational Opportunity for Military Children





Camp Lejeune Naval Hospital



What You Need To Know



- Improving primary and specialty care services
 - Expanding patient-centered primary care (Medical Home Ports)
 - Accepting 9,000 new primary care patients
 - Improved access via Relay Health
 - Special Care Nursery for preterm babies down to 32 weeks
 - Implemented Centering Pregnancy in OB/GYN



What You Need To Know



- Improving customer service
 - Chief Experience Officer / Patient Experience Committee
 - Expanded patient parking areas and parking lot shuttle
 - Implemented patient transport system
 - Expanded Doc's Diner hours of operation (galley)
 - Hourly drop-in child care available at all Child Development Center's
 - Free health/wellness classes for TRICARE eligible beneficiaries



Hospital Campus Expansion



**New
Outpatient
Wing
Opened
22 July**

**ED
Opens
27 Aug**

**Intrepid
Spirit
Opened
5 Aug**

**Pediatric
Clinic
Opens
2015**



Marine Corps Community Services (MCCS)



Wallace Creek Fitness Center



- Opening mid-October
- State-of-the-art fitness facility
- 103,500 square feet, including a recreational pool, running track, six group exercise rooms, fully equipped cardio and free weight areas, two racquetball courts, and a gymnasium
- Pool includes two family-friendly restrooms
- Cardio area includes a spin studio





French Creek Fitness Center



- Opening mid-October
- 33,450 square feet
- Completely renovated from top to bottom
- Full-length basketball court, two racquetball courts, group exercise room, large free weight and selectorized weight equipment area, and a fully equipped cardio area



Located Just Off McHugh Blvd.



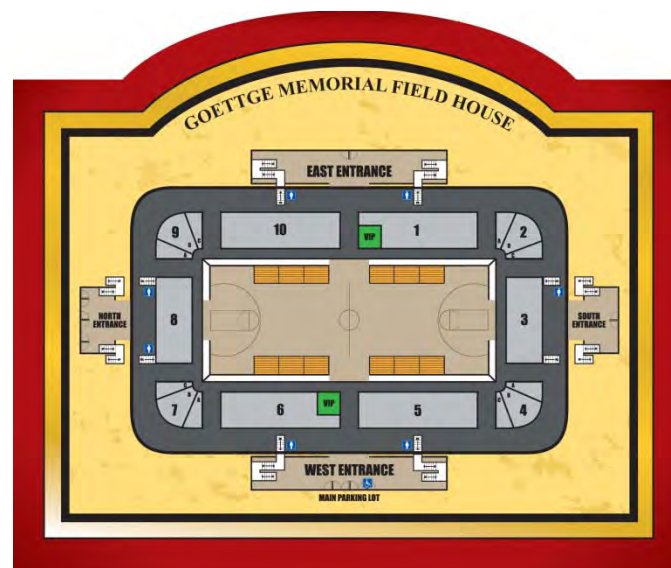
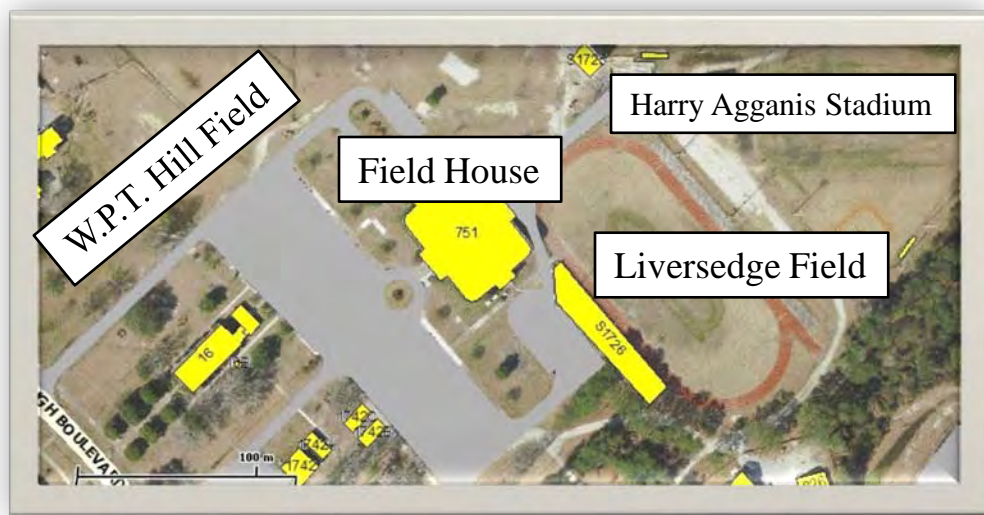
Fully Renovated from Top to Bottom



Goettge Memorial Field House



- Air conditioning recently added for first time since it opened in 1950
- Multi-use facility, including events as diverse as U.S. Marine Corps birthday balls, commanders' holiday parties, and pick-up basketball games
- New Turf at Liversedge Field and Harry Agganis Stadium





McIntyre-Parks Recreational Shooting Complex



- Wireless skeet and voice-operated trap
- Five-stand sporting clays option
- Eight-lane archery range
- Ability to host tournaments
- Located off Old Sawmill Road



Clubhouse and Retail Facility



Archery Range, Too



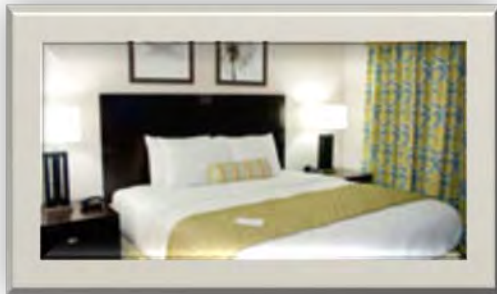
Inns of the Corps – Lejeune Inn



- 140 rooms, 50 of them brand new
- Remaining 90 undergoing complete renovation 45 rooms at a time
- A long time in coming, and we are very proud of the services we now offer!



Lejeune Inn Main Entrance



New Guest Room



Lejeune Inn Playground

“Your lodging facility is the standard of excellence by which all other military and civilian lodging should strive to attain. My sincere compliments.”

“The room was the best that I have seen so far among military inns.”

“This was the very best facility - thank you for your kindness. We did stay in the new building, but we have in the past stayed in your older building as well. Each time, your staff was exceptional.”

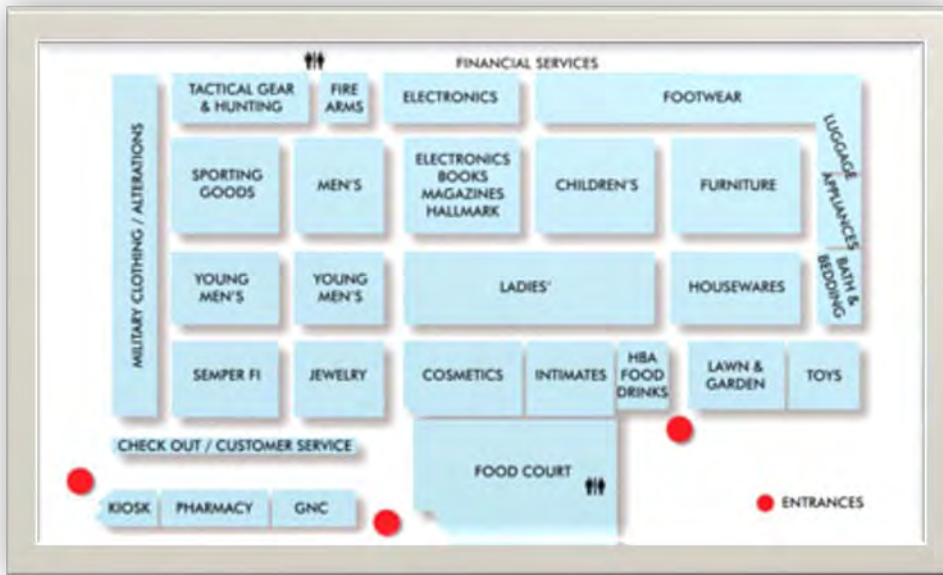
“I didn't get her name; however, the house keeper was very friendly, personable and did a great job. I'm a Housing Inspector for rental vacation homes, and I couldn't help but notice the rooms looked great. Clean, orderly and fresh smelling. Great job!”



Main Exchange



- A premier shopping facility....more than just a department store
- A one-stop shopping mecca that, combined with the Hadnot Point Plaza, offers the maximum in convenience and World Class Customer Service
- Negotiating with Cinnabon and Popeye's Chicken for space in Main Exchange Food Court



Main Exchange Floor plan



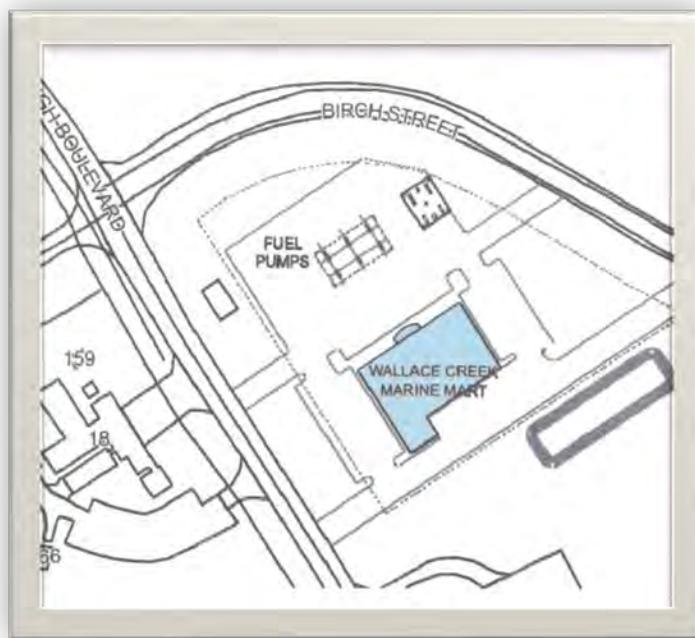
Main Exchange Entrance



Wallace Creek Marine Mart



- Opening April 2014
- Located at the intersection of Birch St. Ext. and McHugh Blvd.



Wallace Creek Marine Mart Location



Gonzalez Boulevard Marine Mart



- Opening February 2014
- Addition of 1900 square feet for a total of 5700 square feet of shopping space



Gonzalez Boulevard Marine Mart



Brewster Marine Mart



- Approved for FY15 Construction Planning Only
- 8860 square feet of shopping space with food vendor (to be determined)



Brewster Marine Mart Proposed Location



Knox Marine Mart



- Approved for FY16 Construction Planning Only
- 7211 square feet of shopping space with 24 fueling stations



Knox Marine Mart Proposed Location



GEN JAMES F. AMOS, USMC 35TH COMMANDANT OF THE MARINE CORPS



“We will keep faith with our Marines, our Sailors and our families... We will ensure that Marines, Sailors and their families will have availability and access to quality facilities and support programs, as well as resources and benefits that provide a quality standard of living. This same effort will be applied equally to our Single Marines.”

-- Commandant's Planning Guidance



Growth in Marine and Family Programs



- Imbedded Military Family Life Counselors
- A New Service: Community Counseling Center for Marines, Sailors, and Families Seeking Brief, Solution-Focused Therapies (Marital, Group, Family Therapy)
- Additional Exceptional Family Member Program Family Case Workers
- Additional New Parent Support Program Home Visitor



Your Opinion Counts!



ICE is Nice

<http://ice.disa.mil>

www.mccslejeune.com

13 Facebook® Pages
Total of 24,367 Fans



Questions ???